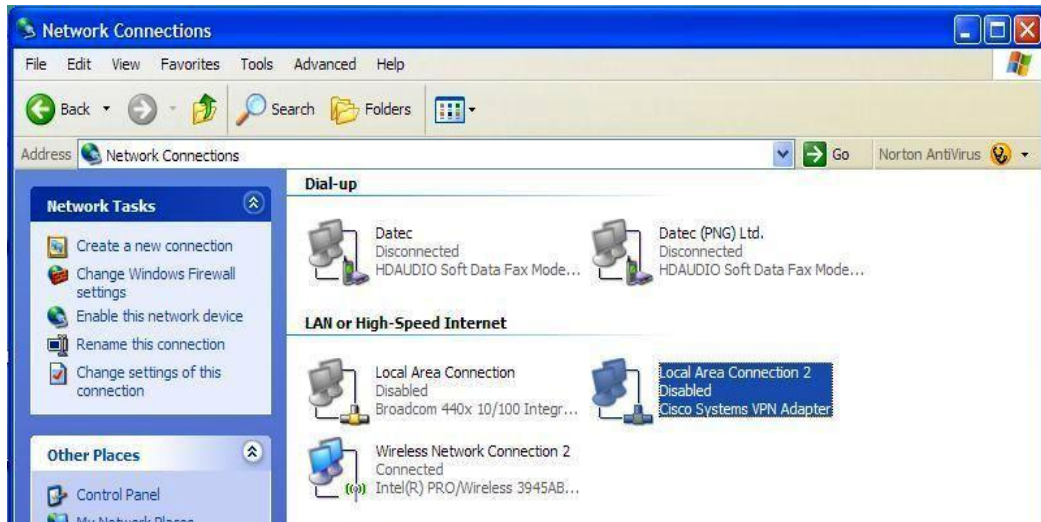


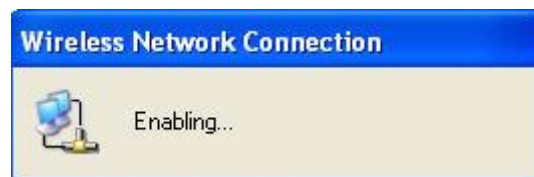
## Datec SurfZone.pg User Setup Guide for Connecting to the DATEC Wireless Network

- 1) If you have not already installed your wireless equipment, follow manufacturing instructions and ensure that your wireless gear is turned on after it has been installed.
- 2)



Open 'My computer'. Go to Control Panel and Double Click on "Network Connections" window. Right-Click your wireless adapter and choose **Enable** the Wireless connection.

- 3)



You will see a status window showing the activity taking place. At this point the computer should be trying to establish/enable a connection.

- 4)



In the system tray you should see an icon of a computer; with a wireless link connected (this is shown by a 'GREEN tick'. **NB:** A 'RED X' means there is no connection).

5)



Once you've established a connection, **Right-Click** on the icon showing computer **RED X** choose "**View Available Wireless Networks**".

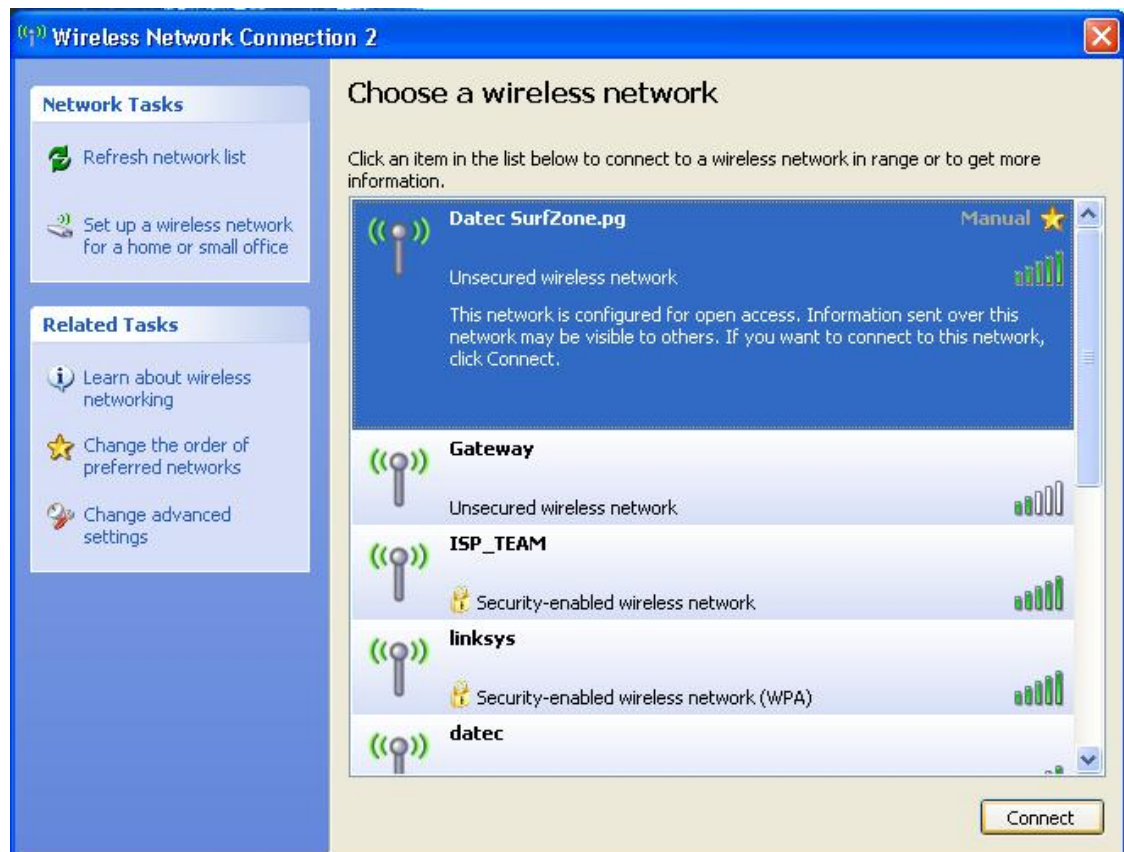
6)



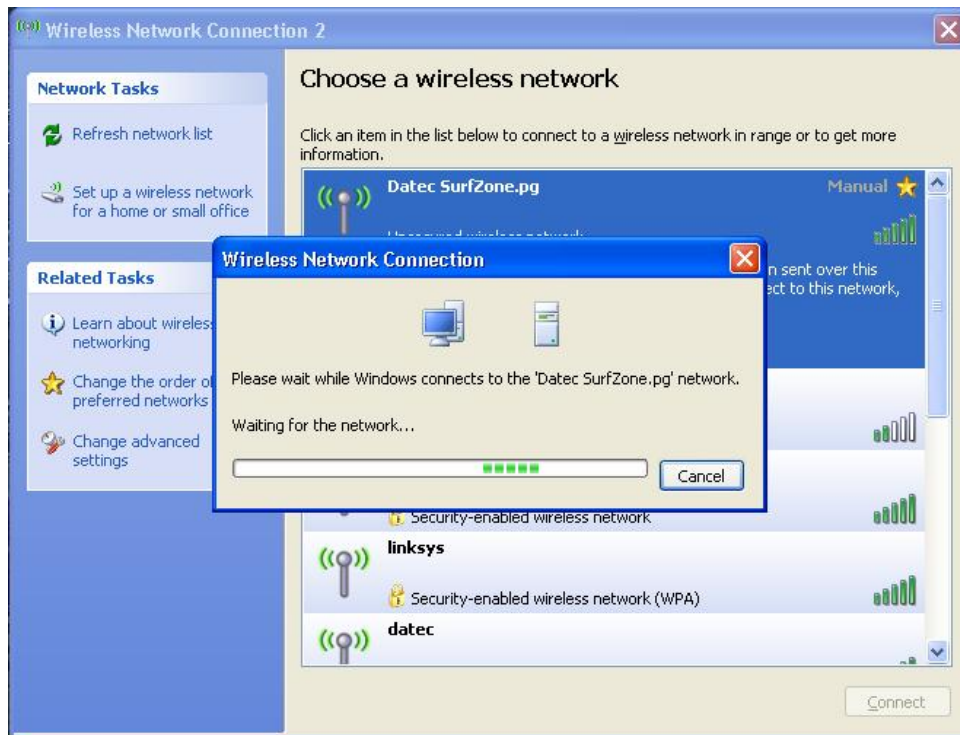
In the "Wireless Network Connection's window", click on "**Refresh network list**".

7)

Select the *Datec SurfZone.pg* wireless connection by clicking on item '*Datec SurfZone.pg*'. Then click on the "**Connect**" button (which is at the bottom of the Wireless Network Connection window).



8)



Now a Status bar will show the wireless network connection. At this point it is trying to establish a connection with the 'Datec SurfZone.pg' Wireless Network.

9)



*That happened after I right clicked on the wireless network and and clicked 'Repair' – then the this pop up came up.*

When a connection is established, a pop-up window, from the icon bar, will give you confirmation

10) Once connected, you can now launch your web browser; you will be prompted with a hotspot login page. Login using your Datec HomeNet account located on

the prepaid card or one that has been provided to you during the contract signup

### **Common Problems to take note of**

- **Metal Fly-Wire:** When a wireless signal hits fly-wire, the signal is scattered away from your laptop. So you may experience low signal if you are located behind those flywire. Open the flywire shutter (if possible) sometimes helps
- **Concrete Walls/ Objects:** Please take note of the fact that Wireless signals don't travel through concrete. So therefore this can also interfere with the Wireless signal.
- **Invalid username or password:** Please check as this can also mean that your account has been suspended, waiting payment.

### **Datec CallCentre**

If you need some assistance with any errors or issues you come across please contact our Call-centre on the following details:-


**CallCentre Number:** 303-1222

**Email:** [callcentre@datec.com.pg](mailto:callcentre@datec.com.pg)

Our call centre is open from 8am to 8pm Monday-Friday and 8am-5pm Saturday and Sunday.

## Connectivity Options

For customers that may not have wireless equipment already installed in their computers (i.e. Laptops and/ or Desktop), the following table lists the recommended items that are available at Datec:

Product Type	Recommended Product	Product Description	Price (incl. VAT)	Suitable For
NUB-362(EXT) High Power (23dbm) 108Mbps USB 2.0 Adapter with detachable Antenna		The USB 2.0 wireless card supporting 802.11b/g (2.4GHz) radio operation. It provides high-speed wireless connection with data rate up to 108Mbps. The shirking dimension, light weight & lower power consumption design can easily integrate into a wide range of devices NUB-362(EXT) has high power and high sensitivity. Further, it provides an external Antenna which can easily advance your distance and performance more flexibility	PGK162.80	Our highly recommended client adapter that boosts a high gain detachable antenna and built to detect very low signals.
Wireless-G PCI Adaptor	Linksys WMP54G	The wireless-G PCI Adaptor connects you with Wireless-G networks at 54Mbps. It is also compatible enough to interoperate with Wireless-B (802.11b) devices. And in either mode your wireless communications are protected by industrial strength WPA	K157.00	The Linksys Wireless PCI Adapter installs in most desktops without the cost and hassle of running network cables. With its external "rubber-duck" antenna, a faint signal can be amplified for maximum reception. Ideal for locating



(Wi-Fi Protected Access), so your data stays secure.

your PC where there is weak signal

Wireless PCI Adaptor (for Notebooks)

Linksys WPC54G Wireless G Notebook adaptor

The Wireless G Notebook Adapter is a hi-speed wireless G (802.11g) networking adapter for your notebook. It delivers data rates of up to 54 Mbps (5 times faster than wireless-B (802.11b)). It also interoperates with wireless-B networks (at 11Mbps). Integrated in this product is also Advanced Wireless Security: Wi-Fi Protected Access (WPA) and up to 128-bit encryption.

K157.00

This credit card size is suitable for laptop computers, that don't have onboard WiFi card. With its easy setup feature, installation is a snap.

The card has inbuilt antenna to maximise weak signals



Internal Wireless Card for Laptop

Linksys WPC 300N PC Card Wireless NLNK5546

Hi-speed Wireless-N (draft 802.11n) networking for your notebook computer. MIMO technology uses multiple radios to create a robust signal that travels up to 4 times farther and reduces dead spots. Up to 12 times faster than wireless-G but can also connect o Wireless-G and -B

K448.45

This credit card size is suitable for laptop computers, that don't have onboard WiFi card. With its easy setup feature, installation is a snap.

The card has inbuilt antenna to maximise weak signals



networks. Advanced wireless security with up to 256-bit encryption.

Wireless adapters that use USB extension cable (for Notebooks/ or Desktops)

Wireless G-USB Network Adapter, Linksys WUSB54G

The Wireless G-USB Network Adapter connects your desktop or Notebook to a wireless network at up to 54Mbps when used with a USB 2.0 port. The easy no tools setup on any desktop or notebook that has USB support, makes installation easy. This Wireless Adapter is also compatible with wireless-B networks (802.11b) at 11 Mbps. Wireless communications are protected with WPA encryption.

K202.00

This product is suitable for both desktops and laptops. Connecting via a standard USB 2.0 Port, it turns any computer into a wireless client. If better reception is needed, an external USB Cable could be connected to, so that the adapter can be placed anyway for better signal reception



Wireless-G portable USB adapter with high-gain antenna

Linksys WUSB54GP USB Adapter LNK0102

This wireless-G portable USB adapter with high-gain antenna connects your desktop or notebook computer to a wireless network at incredible speeds. To install simply plug into any available USB port on your PC and adjust the tilt-and-swivel connector and swing-up antenna for best

K171.10

This USB adapter is suitable for both laptops and personal computers. Recommended for areas that have very weak signal, like in a room in the attic or out-of-sight of the wireless transmitter. With its external antenna, the weakest of



reception. It gets its power through USB connection. This adapter is also compatible with Wireless-B (802.11b) network standards, with data rates up to 11Mbps. Using the WUSB54GP your wireless communications are also protected by 128-bit encryption, so your data is kept secure.

signal, can be received and amplified

Wireless PCI Adapter  
with External Antenna  
(Desktop/ Notebooks)

D-Link DWL-G510

The D-Link AirPlus G DWL-G510 is a wireless PCI Adapter that delivers a maximum wireless signal rate of up to 54Mbps in the 2.4GHz frequency. The DWL G510 also works with 802.11b standard wireless devices.

K110.50

To easily equip a desktop computer (PC) with a wireless capability. The card is installed into your computer

With its external “rubber-duck” antenna, a faint signal can be amplified for maximum reception. Ideal for locating your PC where there is little wireless signal

